

Visit Ullswater

The Lake District

MAP & VISITOR GUIDE



ullswater

www.ullswater.com

How to Find Us

For all its peace and tranquillity, the Ullswater Valley is surprisingly well connected. Located just 5 miles from the M6 motorway (J40) and 3.5 hours by rail from London, it really is very accessible from all over the UK and beyond.



Weather
Forecast available on Lake District Weather line: 0844 846 2444 or www.lakedistrictweatherline.co.uk. Calls cost 7p per minute plus your phone company's access charge.

Public Transport
Bus Service 508 runs from Penrith to Patterdale, open top service at peak time.
Visit www.stagecoachbus.com or www.travelline.info



Connect with us at [www.ullswater.com](https://www.facebook.com/ullswater)



Activities & Things to Do

Cumbria Tourist Guides ☎ 01539 740133 www.cumbriatouristguides.org	
Distant Horizons UK Ltd ☎ CA11 0JJ ☎ 017684 86465 www.distant-horizons.co.uk	A1
Eden Outdoor Adventures ☎ CA10 1AP ☎ 07525 653099 www.edenoutdooradventures.co.uk	
Glenridding Sailing & Activity Centre ☎ CA11 0PE ☎ 017684 82541 www.glenriddingsailingcentre.co.uk	A3
Lakeland Boat Hire ☎ CA10 2NR ☎ 017684 86800 www.lakelandboathire.co.uk	A4
NAV4 Adventure ☎ CA10 2PG ☎ 01931 712174 www.nav4.co.uk	A5
Nic's Nordic Walking ☎ CA11 0QR ☎ 07976 949488 www.nicsnordicwalks.co.uk	A6
Quirky Workshops ☎ CA11 0UT ☎ 017684 83984 www.greystokecyclecafe.co.uk/workshops.htm	A7
Reach Beyond Adventure ☎ CA11 0RR ☎ 017684 83867 www.reachbeyondadventure.co.uk	
Rod Ireland Photography ☎ CA10 2PG ☎ 07982 421699 www.rodireland.co.uk	A9
Rookin House Equestrian & Activity Centre ☎ CA11 0SS ☎ 017684 83561 www.rookinhouse.co.uk	A10
Ullswater Yacht Club ☎ CA10 2NA ☎ 017684 86333 www.ullswateryachtclub.org	A13

Shopping

Catstycam: The Outdoor Shop ☎ CA11 0PA ☎ 017684 82351 www.catstycam.com	R1
Glenridding Convenience Store ☎ CA11 0PA ☎ 017684 82221 www.sharmans.co.uk	R6
Glenridding Gallery ☎ CA11 0PA ☎ 07736 814 128 www.glenriddinggallery.co.uk	R2
Luiza Oliver Hairdressing & Beauty ☎ CA11 0PA ☎ 07778 501546 www.luizaoliver.co.uk	R4
Patterdale Village Store ☎ CA11 0NW ☎ 017684 82220 www.patterdalevillagestore.co.uk	R8
Rheged Centre ☎ CA11 0DQ ☎ 01768 868000 www.rheged.com	R9
Ullswater 'Steamers' Gift Shop and Information Centre ☎ CA10 2NW ☎ 017684 86135 www.lakedistrictstates.co.uk	R5
The Alpaca Centre ☎ CA11 0ES ☎ 01768 891440 www.thealpacaclotingco.co.uk	R7

Walked the Ullswater Way?
Claim your free pin badge from these businesses.

Eating Out

1863 Bar Bistro Rooms ☎ CA10 2NH ☎ 017684 86334 www.1863ullswater.co.uk	E1
Aira Force Tea Room ☎ CA11 0JS ☎ 017684 82067 www.nationaltrust.org.uk/aira-force	E2
Another Place, The Lake ☎ CA11 0LP ☎ 017684 86442 www.another.place	E18
Askham Hall & Café ☎ CA10 2PF ☎ 01931 712350 www.askhamhall.co.uk	E3
Beckside Farm Café ☎ CA10 2NF ☎ 017684 86996 www.becksidefarm.co.uk	E4
The Crown Inn Pooley Bridge ☎ CA10 2NP ☎ 017684 25869 www.thwaites.co.uk/crown-at-pooley-bridge	E19
Fairlight Guest House ☎ CA11 0PD ☎ 017684 82397 www.fairlightguesthouse.co.uk	E20
Fellbites Cafe ☎ CA11 0PD ☎ 017684 82781 www.fellbitescafe.co.uk	E6
George & Dragon Clifton ☎ CA10 2ER ☎ 01768 865 381 www.georgeanddragonclifton.co.uk	E7
Granny Dowbekins Tearooms ☎ CA10 2NP ☎ 01768 486453 www.grannydowbekins.co.uk	E8
Helvellyn Country Kitchen ☎ CA11 0PA ☎ 017684 82598 www.helvellynkitchen.co.uk	E10
Inn on the Lake ☎ CA11 0PE ☎ 017684 82444 www.lakedistricthotels.net/innonthelake	E11
Pooley Bridge Inn ☎ CA10 2NN ☎ 017684 86215 www.pooleybridgeinn.co.uk	E17
Queen's Head Inn ☎ CA10 2JF ☎ 01768 863219 www.queensheadinn.co.uk	E12
The Royal Hotel at Dockray ☎ CA11 0JY ☎ 017684 82356 www.the-royal-dockray.co.uk	E18
Sharrow Bay Hotel ☎ CA10 2LZ ☎ 017684 86301 www.sharrowbay.co.uk	E13
Side Farm Tea Room ☎ CA11 0NL ☎ 017684 82337 www.patterdale.org/Side%20Farm.htm	E14
Sun Inn Pooley Bridge ☎ CA10 2NN ☎ 017684 86205 www.suninnpooleybridge.co.uk	E15
The Glenridding Hotel ☎ CA11 0PB ☎ 017684 82228 www.theglenriddinghotel.com	E16

Gillside Farm (Bunkhouse and Caravans) ☎ CA11 0QQ ☎ 017684 82346 www.gillsidecaravanandcampingsite.co.uk	S7
Keldas View Cottage ☎ CA11 0QD ☎ 07736 814128 www.keldasviewcottage.com	S8
Patterdale Hall Estate ☎ CA11 0PJ ☎ 017684 82308 www.patterdalehallestate.com	S9
The Old Smithy Cottage ☎ CA11 0PJ ☎ 07799 520206 www.theoldsmithyullswater.com	S20
The Quiet Site Cottages ☎ CA11 0LS ☎ 07768 727016 www.thequietsite.co.uk	S10
Rookin House Equestrian & Activity Centre ☎ CA11 0SS ☎ 017684 83561 www.rookinhouse.co.uk	S19

Ullswater Holiday Park ☎ CA11 0LR ☎ 017684 86666 www.ullswaterholidaypark.co.uk	S11
Ullswater House Self Catering ☎ CA11 0PA ☎ 07734 852169 www.glenridding.com	S12
Ullswater View Cottage ☎ CA11 0QH ☎ 07515 125025 or 01539 726458 www.ullswaterview.com	S13
Waterfoot Park ☎ CA11 0JF ☎ 017684 86302 www.waterfootpark.co.uk	S14
Watnook Lakeside Accommodation ☎ CA10 2ND ☎ 07709 098507 www.watnookonullswater.com	S15
Wordsworth Cottage & Barn ☎ CA11 0NP ☎ 07761 144427 www.wordsworthcottage.co.uk	S16

Ullswater 'Steamers' Gift Shop and Information Centre ☎ CA10 2NW ☎ 017684 86135 www.lakedistrictstates.co.uk	T2
Penrith TIC ☎ CA11 7PT ☎ 01768 867466 www.visiteden.co.uk	T1
Pooley Bridge TIC ☎ CA10 2NW ☎ 017684 86135 www.visiteden.co.uk	T3

Ullswater Information Centre ☎ CA11 0PD ☎ 07769 956144 www.visiteden.co.uk	T2
--	----

Tourist Information

Penrith TIC ☎ CA11 7PT ☎ 01768 867466 www.visiteden.co.uk	T1
Pooley Bridge TIC ☎ CA10 2NW ☎ 017684 86135 www.visiteden.co.uk	T3
Ullswater Information Centre ☎ CA11 0PD ☎ 07769 956144 www.visiteden.co.uk	T2

Self Catering

Absolute Escapes ☎ CA11 7YF ☎ 01768 892777 www.absolute-escapes.com	
Beckside Farm ☎ CA10 2NF ☎ 017684 86996 www.becksidefarm.co.uk	S17
Deepdale Hall 'The Byre' ☎ CA11 0NR ☎ 017684 82369 www.deepdalehall.co.uk	S2
Elm How, Cruck Barn and Eagle Cottage ☎ CA11 0PU ☎ 07951 725727 www.matsonground.co.uk	S3
Fitch Cottage ☎ CA11 0RJ ☎ 017684 83368 www.motherbyhouse.co.uk	S18
Hartsop Fold Holiday Lodges ☎ CA11 0PH ☎ 017684 82874 www.hartsop-fold.co.uk	S4
Helvellyn Cottage ☎ CA11 0QN ☎ 017684 82474 www.helvellyn-cottage.com	S5
Hillcroft Park ☎ CA10 2LT ☎ 017684 86363 www.hillcroftpark.co.uk	S6

Glenridding House ☎ CA11 0PH ☎ 017684 82874 www.glenriddinghouse.com	B7
George & Dragon Clifton ☎ CA10 2ER ☎ 01768 865 381 www.georgeanddragonclifton.co.uk	B6
Lowthwaite B&B ☎ CA11 0LE ☎ 017684 82343 www.lowthwaiteullswater.com	B9
Meadow View ☎ CA10 2JF ☎ 07970 603622 www.meadowviewtirril.co.uk	B10
Mossrag Guest House ☎ CA11 0PA ☎ 017684 82500 www.mossrag.co.uk	B11
Motherby House ☎ CA11 0RJ ☎ 017684 83368 www.motherbyhouse.co.uk	B12
Sun Inn Pooley Bridge ☎ CA10 2NN ☎ 017684 86205 www.suninnpooleybridge.co.uk	B13
Pooley Bridge Inn ☎ CA10 2NN ☎ 017684 86215 www.pooleybridgeinn.co.uk	B16
The Royal Hotel at Dockray ☎ CA11 0JY ☎ 017684 82356 www.the-royal-dockray.co.uk	B17
Ullswater Guest House ☎ CA10 2NN ☎ 017684 86292 www.ullswaterguesthouse.co.uk	B15

Glenridding Sailing & Activity Centre ☎ CA11 0PE ☎ 017684 82541 www.glenriddingsailingcentre.co.uk	A3
Lakeland Boat Hire ☎ CA10 2NR ☎ 017684 86800 www.lakelandboathire.co.uk	A4
NAV4 Adventure ☎ CA10 2PG ☎ 01931 712174 www.nav4.co.uk	A5
Nic's Nordic Walking ☎ CA11 0QR ☎ 07976 949488 www.nicsnordicwalks.co.uk	A6
Quirky Workshops ☎ CA11 0UT ☎ 017684 83984 www.greystokecyclecafe.co.uk/workshops.htm	A7
Reach Beyond Adventure ☎ CA11 0RR ☎ 017684 83867 www.reachbeyondadventure.co.uk	
Rod Ireland Photography ☎ CA10 2PG ☎ 07982 421699 www.rodireland.co.uk	A9
Rookin House Equestrian & Activity Centre ☎ CA11 0SS ☎ 017684 83561 www.rookinhouse.co.uk	A10
Ullswater Yacht Club ☎ CA10 2NA ☎ 017684 86333 www.ullswateryachtclub.org	A13

Gillside Farm (Bunkhouse and Caravans) ☎ CA11 0QQ ☎ 017684 82346 www.gillsidecaravanandcampingsite.co.uk	S7
Keldas View Cottage ☎ CA11 0QD ☎ 07736 814128 www.keldasviewcottage.com	S8
Patterdale Hall Estate ☎ CA11 0PJ ☎ 017684 82308 www.patterdalehallestate.com	S9
The Old Smithy Cottage ☎ CA11 0PJ ☎ 07799 520206 www.theoldsmithyullswater.com	S20
The Quiet Site Cottages ☎ CA11 0LS ☎ 07768 727016 www.thequietsite.co.uk	S10
Rookin House Equestrian & Activity Centre ☎ CA11 0SS ☎ 017684 83561 www.rookinhouse.co.uk	S19

Ullswater Holiday Park ☎ CA11 0LR ☎ 017684 86666 www.ullswaterholidaypark.co.uk	S11
Ullswater House Self Catering ☎ CA11 0PA ☎ 07734 852169 www.glenridding.com	S12
Ullswater View Cottage ☎ CA11 0QH ☎ 07515 125025 or 01539 726458 www.ullswaterview.com	S13
Waterfoot Park ☎ CA11 0JF ☎ 017684 86302 www.waterfootpark.co.uk	S14
Watnook Lakeside Accommodation ☎ CA10 2ND ☎ 07709 098507 www.watnookonullswater.com	S15
Wordsworth Cottage & Barn ☎ CA11 0NP ☎ 07761 144427 www.wordsworthcottage.co.uk	S16

Ullswater 'Steamers' Gift Shop and Information Centre ☎ CA10 2NW ☎ 017684 86135 www.lakedistrictstates.co.uk	T2
Penrith TIC ☎ CA11 7PT ☎ 01768 867466 www.visiteden.co.uk	T1
Pooley Bridge TIC ☎ CA10 2NW ☎ 017684 86135 www.visiteden.co.uk	T3

Ullswater Information Centre ☎ CA11 0PD ☎ 07769 956144 www.visiteden.co.uk	T2
--	----

Ullswater 'Steamers' Gift Shop and Information Centre ☎ CA10 2NW ☎ 017684 86135 www.lakedistrictstates.co.uk	T2
Penrith TIC ☎ CA11 7PT ☎ 01768 867466 www.visiteden.co.uk	T1
Pooley Bridge TIC ☎ CA10 2NW ☎ 017684 86135 www.visiteden.co.uk	T3

Ullswater 'Steamers' Gift Shop and Information Centre ☎ CA10 2NW ☎ 017684 86135 www.lakedistrictstates.co.uk	T2
Penrith TIC ☎ CA11 7PT ☎ 01768 867466 www.visiteden.co.uk	T1
Pooley Bridge TIC ☎ CA10 2NW ☎ 017684 86135 www.visiteden.co.uk	T3

Ullswater 'Steamers' Gift Shop and Information Centre ☎ CA10 2NW ☎ 017684 86135 www.lakedistrictstates.co.uk	T2
Penrith TIC ☎ CA11 7PT ☎ 01768 867466 www.visiteden.co.uk	T1
Pooley Bridge TIC ☎ CA10 2NW ☎ 017684 86135 www.visiteden.co.uk	T3

Ullswater 'Steamers' Gift Shop and Information Centre ☎ CA10 2NW ☎ 017684 86135 www.lakedistrictstates.co.uk	T2
Penrith TIC ☎ CA11 7PT ☎ 01768 867466 www.visiteden.co.uk	T1
Pooley Bridge TIC ☎ CA10 2NW ☎ 017684 86135 www.visiteden.co.uk	T3

Ullswater 'Steamers' Gift Shop and Information Centre ☎ CA10 2NW ☎ 017684 86135 www.lakedistrictstates.co.uk	T2
Penrith TIC ☎ CA11 7PT ☎ 01768 867466 www.visiteden.co.uk	T1
Pooley Bridge TIC ☎ CA10 2NW ☎ 017684 86135 www.visiteden.co.uk	T3

Ullswater 'Steamers' Gift Shop and Information Centre ☎ CA10 2NW ☎ 017684 86135 www.lakedistrictstates.co.uk	T2
Penrith TIC ☎ CA11 7PT ☎ 01768 867466 www.visiteden.co.uk	T1
Pooley Bridge TIC ☎ CA10 2NW ☎ 017684 86135 www.visiteden.co.uk	T3

Ullswater 'Steamers' Gift Shop and Information Centre ☎ CA10 2NW ☎ 017684 86135 www.lakedistrictstates.co.uk	T2
Penrith TIC ☎ CA11 7PT ☎ 01768 867466 www.visiteden.co.uk	T1
Pooley Bridge TIC ☎ CA10 2NW ☎ 017684 86135 www.visiteden.co.uk	T3

Ullswater 'Steamers' Gift Shop and Information Centre ☎ CA10 2NW ☎ 017684 86135 www.lakedistrictstates.co.uk	T2
Penrith TIC ☎ CA11 7PT ☎ 01768 867466 www.visiteden.co.uk	T1
Pooley Bridge TIC ☎ CA10 2NW ☎ 017684 86135 www.visiteden.co.uk	T3

Ullswater 'Steamers' Gift Shop and Information Centre ☎ CA10 2NW ☎ 017684 86135 www.lakedistrictstates.co.uk	T2
Penrith TIC ☎ CA11 7PT ☎ 01768 867466 www.visiteden.co.uk	T1
Pooley Bridge TIC ☎ CA10 2NW ☎ 017684 86135 www.visiteden.co.uk	T3

Ullswater 'Steamers' Gift Shop and Information Centre ☎ CA10 2NW ☎ 017684 86135 www.lakedistrictstates.co.uk	T2
Penrith TIC ☎ CA11 7PT ☎ 01768 867466 www.visiteden.co.uk	T1
Pooley Bridge TIC ☎ CA10 2NW ☎ 017684 86135 www.visiteden.co.uk	T3

Ullswater 'Steamers' Gift Shop and Information Centre ☎ CA10 2NW ☎ 017684 86135 www.lakedistrictstates.co.uk	T2
Penrith TIC ☎ CA11 7PT ☎ 01768 867466 www.visiteden.co.uk	T1
Pooley Bridge TIC ☎ CA10 2NW ☎ 017684 86135 www.visiteden.co.uk	T3

Bed & Breakfast

1863 Bar Bistro Rooms

CA10 2NH ☎ 017684 86334

www.1863ullswater.co.uk

Beech House

CA11 0PA ☎ 017684 82037

www.beechhouse.com

The Crown Inn Pooley Bridge

CA10 2NP ☎ 017684 25869

www.thwaites.co.uk/crown-at-pooley-bridge

B1

B2

B1B

Lots to see and do

BY BIKE

With lots of lovely biking routes around the Ullswater Valley, don't miss a pedal up High Street for breathtaking views across the lake or stop off to recharge and refuel on a C2C cycle challenge.

FOR WALKERS

Discover a plethora of iconic Lakeland walks, from the idyllic Howtown lakeshore path to Helvellyn and its infamous Striding Edge, there's something for all ages and experience. For routes try visiteden.co.uk

ON THE WATER

Enjoy Ullswater's iconic and memorable views with a trip on the celebrated Ullswater 'Steamers'. Alternatively, learn to sail, hire a rowing boat or go on a guided canoe adventure from various locations around the lake!

SUSTAINABLE TRANSPORT

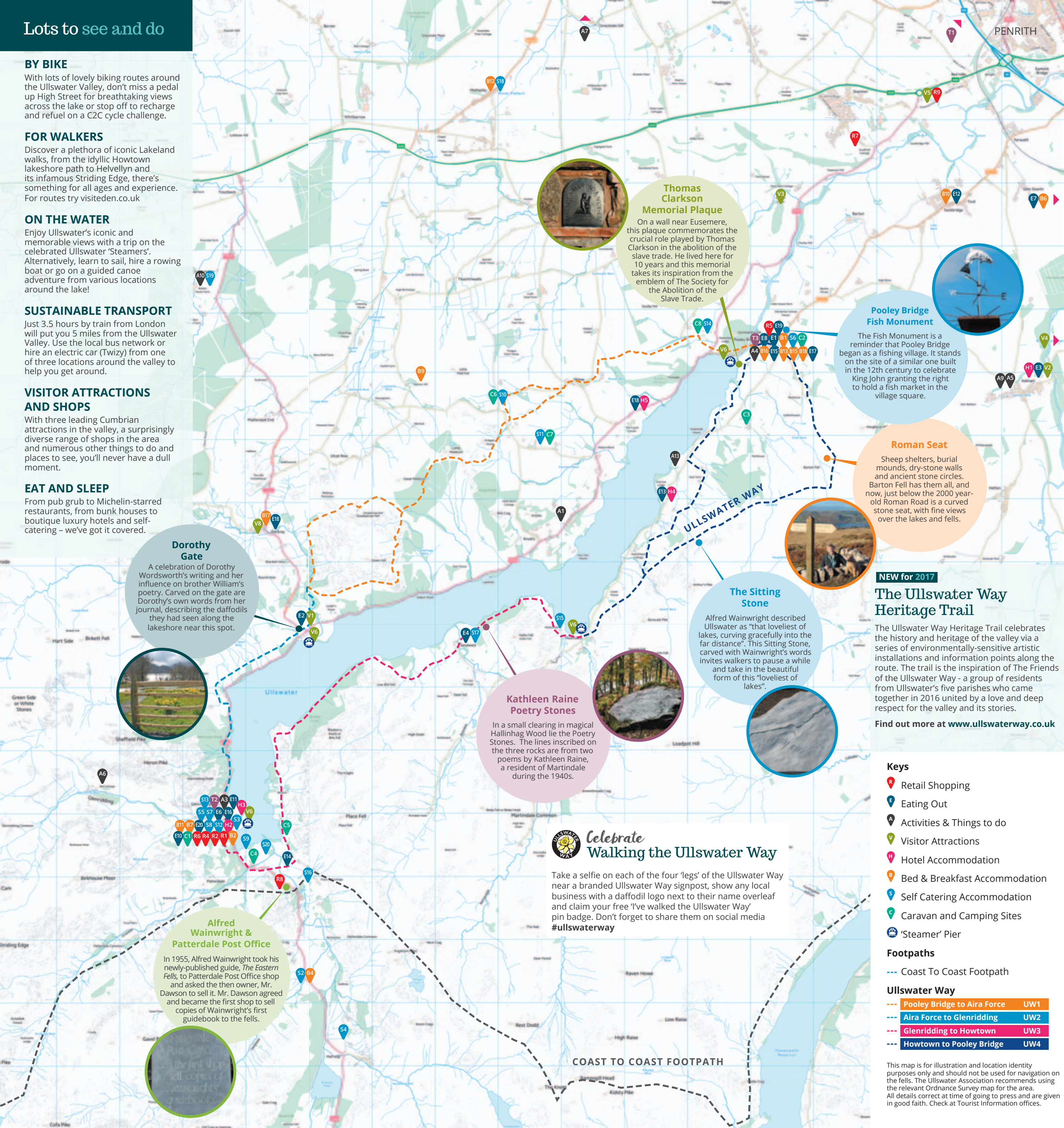
Just 3.5 hours by train from London will put you 5 miles from the Ullswater Valley. Use the local bus network or hire an electric car (Twizy) from one of three locations around the valley to help you get around.

VISITOR ATTRACTIONS AND SHOPS

With three leading Cumbrian attractions in the valley, a surprisingly diverse range of shops in the area and numerous other things to do and places to see, you'll never have a dull moment.

EAT AND SLEEP

From pub grub to Michelin-starred restaurants, from bunk houses to boutique luxury hotels and self-catering – we've got it covered.



Walk the Ullswater Way



The Ullswater Way is a stunning 20 mile walking route around Ullswater.

The route can be walked in either direction and from any starting point. Why not walk the route in shorter sections, using an open top bus or “Steamer” to start your journey!

UW1 Pooley Bridge to Aira Force

From Pooley Bridge the Ullswater Way takes you on paths through woodland and fields to Maiden Castle. Once a defended settlement, it is now hidden by grass, but from this raised vantage point you have spectacular views down the Ullswater Valley, and also to the Pennines to the east and Blencathra to the north.

The Way continues on to Bennethead and then on quiet roads, or through fields, towards the beautifully situated Watermillock Church before leaving the road to join a track through the quiet woods of Swinburn Park (once one of five medieval deer parks surrounding Ullswater).

Option: Leaving the woods there is a choice of paths: walk round and over the summit of Gowbarrow to enter the upper reaches of Aira Force, or continue along the path shouldering Gowbarrow, where the views open to the whole of Ullswater and the rising mountains ahead. Take a rest on Memorial Seat and enjoy the panorama from this grand balcony. In the distance you will see Lyulph's Tower – a sixteenth century castellated tower, before reaching the spectacular waterfalls of Aira Force.

UW2 Aira Force to Glenridding

This section includes the magnificent waterfalls at Aira. Allow time to explore the paths through the old woodlands and landscaped glades before reaching the spectacular stone arch bridge spanning the 65 foot waterfall.

The Way now passes through the ancient woodland of Glencoyne Deer Park. Most famously, Glencoyne Wood was the place where, in 1802, William and Dorothy Wordsworth saw daffodils by the lakeshore. The encounter is described in detail in a celebrated entry in Dorothy's Grasmere Journal and inspired William Wordsworth to write his most famous poem “I wandered lonely as a cloud, That floats on high o'er vales and hills, When all at once I saw a crowd, A host of golden daffodils; Beside the lake, beneath the trees, Fluttering and dancing in the breeze.”

At Glencoyne, cross the road to join a web of paths meandering beside Ullswater, where you can stop and admire the view down the lake before arriving in Glenridding. Please take care – there is a 100m section along the side of the A592.

UW3 Glenridding to Howtown

The Ullswater Way now weaves its way with the road, but on good paths and clear crossings. The route passes King George V playing fields – named “the prettiest field in England” by William Wordsworth, before crossing the open valley to Side Farm and heading back northwards along and above the shores of Ullswater. This section of path, described by Wainwright as “the most beautiful and rewarding walk in Lakeland” undulates through woodland and open fell giving stunning views over Ullswater and its islands. The Way passes through the little hamlet of Sandwick to reach Howtown and the Steamer pier.

UW4 Howtown to Pooley Bridge

Undulating walk through farm land and open fell. Please take care: there is a 500m section on the road from Cross Dormont to Waterside House. Just beyond Howtown, the Way takes you up onto the moorland edge with extensive views over Ullswater.

Option: At Swarthbeck, choose to continue on the open moorland to reach the Cockpit – an impressive large stone circle, before descending on a wide track to join a road leading into Pooley Bridge. Or, alternatively you can take a lower path which takes you through farm land and past farmhouses to reach the Howtown road at Cross Dormont.

The path then takes you through a working sheep farm and campsite following the water's edge round to Pooley Bridge.

Welcome to Ullswater



Welcome to Ullswater, a glorious Cumbrian treasure nestled on the eastern fringes of the Lake District National Park, adjacent to the tranquil Eden Valley and just a short drive from the M6 motorway.

Forget bright lights and tourist hot spots, the Ullswater Valley is a haven of peace and tranquillity – a must for walkers, water-lovers and those looking to escape the daily grind.

Ullswater itself is of course the main attraction. Surrounded by gently rolling countryside at the northern end around Pooley Bridge, a trip south down the lakeshore gives way to sheer fellsides that drop away into the water below, culminating in the majesty of England's third highest mountain, Helvellyn.

Whether your visit is an annual holiday, a short break or just an escape for the day, Ullswater has a surprisingly diverse range of activities, places to stay, visit, eat and shop – many of which can be found in this leaflet. However for more comprehensive information on our beautiful area, visit ullswater.com



Have a wonderful visit - just don't tell everyone...